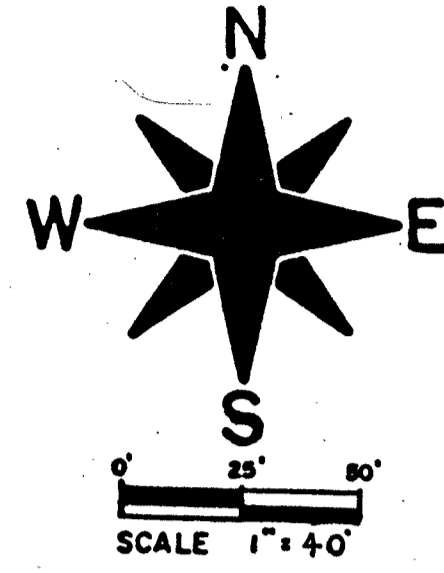


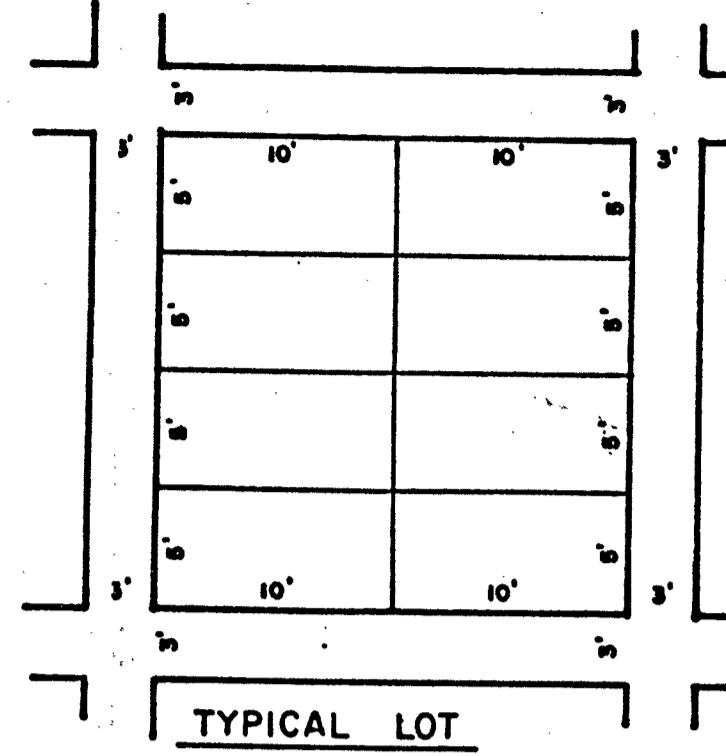
SUMMIT CEMETERY 1992 ADDITION

LOCATED IN THE SE. 1/4 OF THE SE. 1/4 AND THE SW. 1/4 OF THE SE. 1/4 OF SECTION 15, T. 7 N., R. 17 E., TOWN OF SUMMIT, WAUKESHA COUNTY, WISCONSIN



SCALE 1" = 40'

BEARINGS REFERENCED TO THE EAST LINE OF THE SE. 1/4 OF SECTION 15, ASSUMED BEARING, N. 0° 39' 31" E.



TYPICAL LOT

UNPLATTED LAND

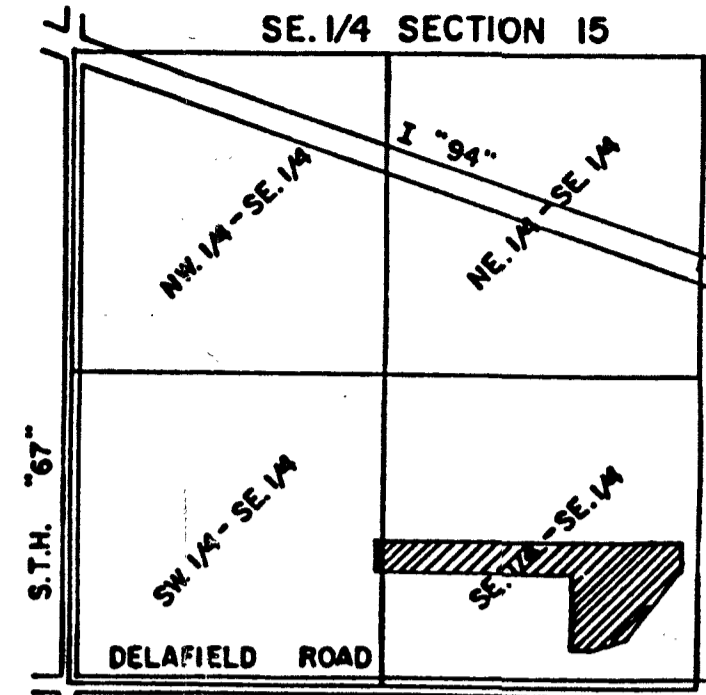
LEGEND

3" DIA. STEEL CROSS FOUND

2" X 30" IRON PIPE SET, WT. 3.65 LB./FT.

LOTS 2-62, 63-68, 118-119, 585-700 ARE STAKED WITH CONCRETE MARKERS FOUND IN PLACE

LOTS 701-859 ARE STAKED WITH 1/4" X 5" STEEL NAILS, TO BE REPLACED WITH CONCRETE MARKERS BY CEMETERY PERSONNEL



LOCATION SKETCH

